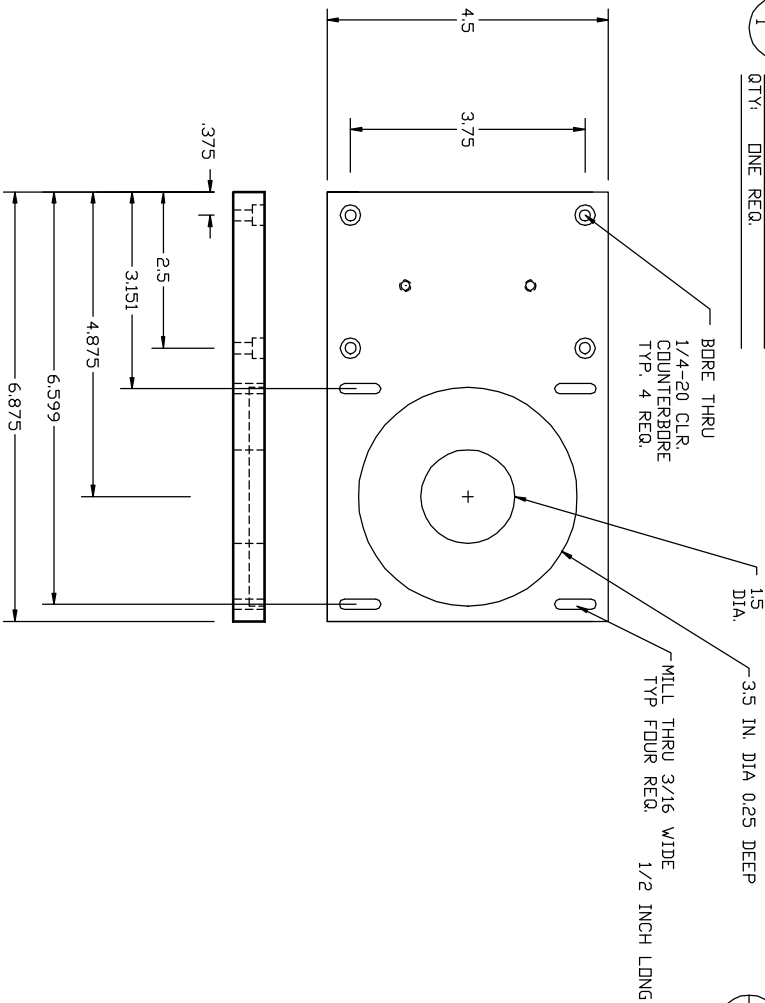


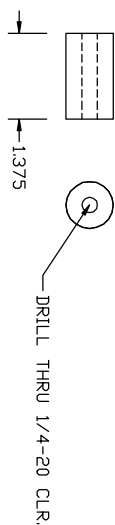
36  
1

PART: MOTOR PLATE  
MAT'L: 3/8 AL. PLATE  
QTY: ONE REQ.



36  
2

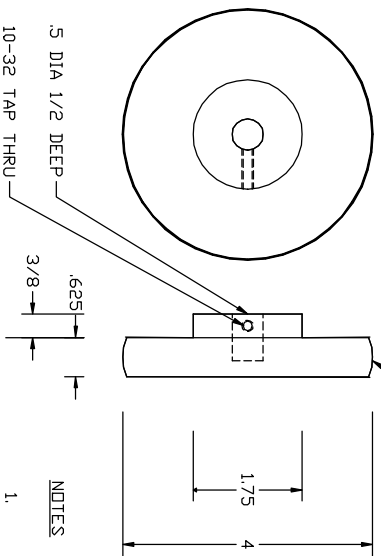
PART: PILLAR  
MAT'L: 3/4 IN DIA. AL. ROD  
QTY: FOUR REQ.



36  
3

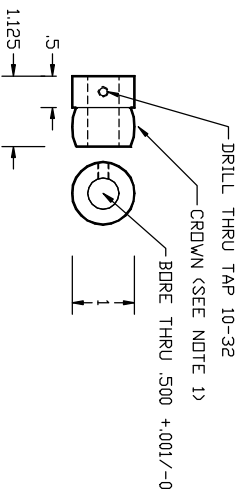
PART: BIG PULLEY  
MAT'L: ALUMINUM  
QTY: ONE REQ.

THE CROWN IS TO KEEP A THIN (0.040) BELT ON  
KNOCKING DOWN 1/32 WITH A FILE PROBABLY O.K.



36  
4

PART: SMALL PULLEY  
MAT'L: 1 INCH AL. ROD  
QTY: ONE REQ.



NOTES  
1.

LEUSCHNER OBSERVATORY			
UNIVERSITY OF CALIFORNIA - BERKELEY			
KATZMAN AUTOMATED IMAGING TELESCOPE			
DEC SERVO DRIVE			
PARTS			
BY: R. TREFFERS	DATE: 7/21/00	DRAWN: KAIT037	SCALE: NOT TO SCALE
REVISION	DATE	BY	NO
			KAIT036