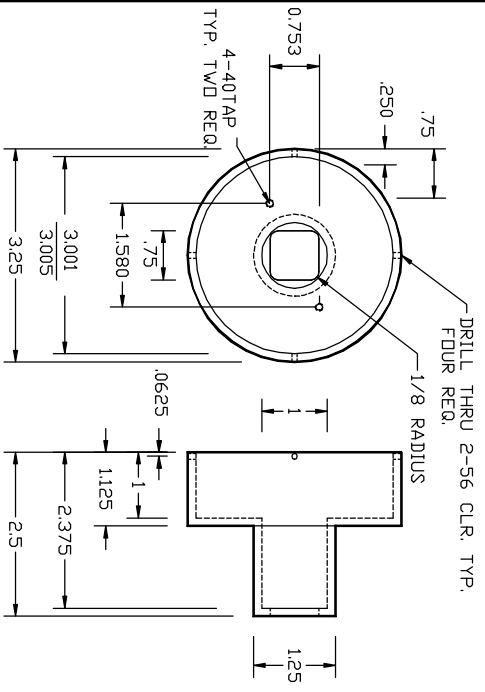
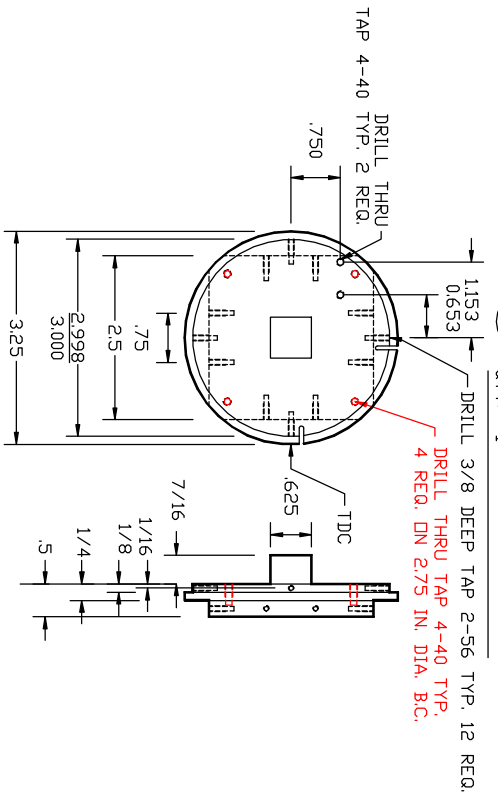


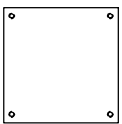
34 PART: CHIP SNOOT
 MAT'L: 6061 AL.
 QTY: 1



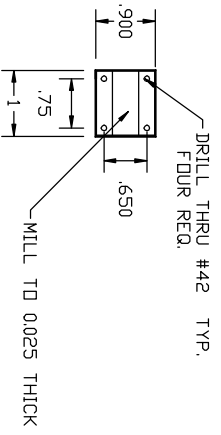
34 PART: CHIP MOUNT
 MAT'L: 6061 AL.
 QTY: 1



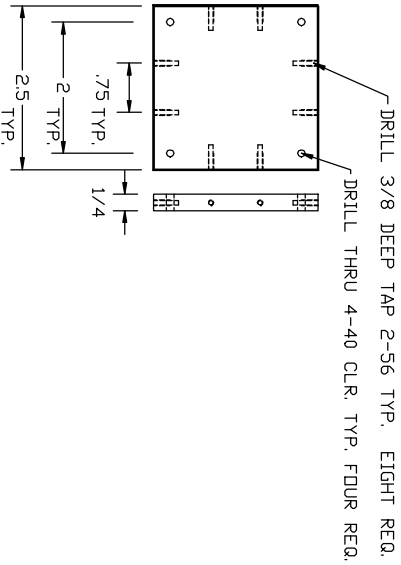
34 PART: CHIP CLIP
 MAT'L: 6061 AL.
 QTY: 1



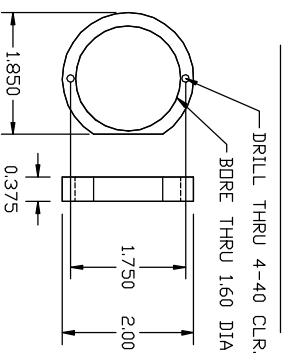
34 PART: SPACERS
 MAT'L: 1/16" G10 FIBERGLASS
 QTY: 4



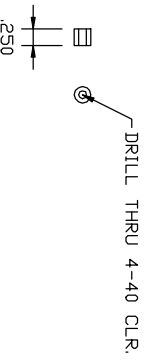
34 PART: BRACKET
 MAT'L: 6061 AL.
 QTY: 1



34 PART: COLLAR
 MAT'L: 6061 AL.
 QTY: TWO REQ.



34 PART: SPACERS
 MAT'L: AL ROD
 QTY: 4



7/27/2000 MODIFY 2-56 MTNG SCREW LOCATIONS
 1/18/2001 ADD COLLAR MODIFY SNOOT

LEUSCHNER OBSERVATORY			
UNIVERSITY OF CALIFORNIA - BERKELEY			
IR CAMERA	DATE	BY	REV
DEWAR MARK II	1/18/2001	R. TREFFERS	1
CHIP HOLDER			
IR CAMERA	1/18/2001	R. TREFFERS	1
CHIP HOLDER			
IR CAMERA	1/18/2001	R. TREFFERS	1
CHIP HOLDER			
IR CAMERA	1/18/2001	R. TREFFERS	1
CHIP HOLDER			