

**CIO-CTR05
&
CIO-CTR10**

ComputerBoards, Inc.
Revision 4
June 1998

LIFETIME PRODUCT WARRANTY

Every ComputerBoards, Inc. product is warranted against defects in materials or workmanship for the life of the product, to the original purchaser. Any products found to be defective in material or workmanship will be repaired or replaced promptly.

LIFETIME HARSH ENVIRONMENT WARRANTY™

Any ComputerBoards, Inc. product which is damaged due to misuse may be replaced for only 50% of the current price. I/O boards face some harsh environments, some harsher than the boards are designed to withstand. When that happens, just return the board with an order for its replacement at only 50% of the list price. ComputerBoards does not need to profit from your misfortune. By the way, we will honor this warranty for any other manufacturer's board that we have a replacement for!

30 DAY MONEY-BACK GUARANTEE

Any ComputerBoards, Inc. product may be returned within 30 days of purchase for a full refund of the price paid for the product being returned. If you are not satisfied, or chose the wrong product by mistake, you do not have to keep it. Please call for a RMA number first. No credits or returns accepted without a copy of the original invoice. Some software products are subject to a repackaging fee.

These warranties are in lieu of all other warranties, expressed or implied, including any implied warranty of merchantability or fitness for a particular application. The remedies provided herein are the buyer's sole and exclusive remedies.

Neither ComputerBoards, Inc., nor its employees shall be liable for any direct or indirect, special, incidental or consequential damage arising from the use of its products, even if ComputerBoards has been notified in advance of the possibility of such damages.

Notice

ComputerBoards, Inc. does not authorize any ComputerBoards, Inc. product for use in life support systems and/or devices without the written approval of the President of ComputerBoards, Inc. Life support devices/systems are devices or systems which, a) are intended for surgical implantation into the body, or b) support or sustain life and whose failure to perform can be reasonably expected to result in injury. ComputerBoards, Inc. products are not designed with the components required, and are not subject to the testing required to ensure a level of reliability suitable for the treatment and diagnosis of people.

QUICK START	1
INSTALLING INSTACAL™	1
RUNNING INSTACAL™	2
DETAILED INSTALLATION	4
BASE ADDRESS	4
INTERRUPT LEVEL SELECT	5
WAIT STATE JUMPER	6
INSTALLING THE CIO-CTR IN THE COMPUTER	7
CIO-CTR10 SECOND 9513	8
SOFTWARE	9
CIO-CTR ARCHITECTURE	10
CONTROL & DATA REGISTERS	10
CIO-CTR10 & CIO-CTR05 ADDRESSES	10
DIGITAL I/O REGISTERS	12
SPECIFICATIONS	13
POWER CONSUMPTION	13
DIGITAL I/O	13
COUNTER I/O	13
INTERRUPT INPUT	13
ENVIRONMENTAL	14
ELECTRONICS AND INTERFACING	15
VOLTAGE DIVIDERS	15
LOW PASS FILTERS DE-BOUNCE INPUTS	17

QUICK START

The CIO-CTR05 and CIO-CTR10 are easy to use. Here is the quick start procedure for those who know how to open the PC and install expansion boards, and want to dive right in. The CIO-CTR10 is really a single board with two CIO-CTR05's on it. For the balance of this manual we will refer to both boards as the CIO-CTR, and will only use the complete board name in instances where there are items specific to one board or the other.

This quick start procedure will help you quickly and easily setup, install and test your board. We assume you already know how to open the PC and install expansion boards. If you are unfamiliar or uncomfortable with board installation, please refer to your computer's documentation. Though we recommend the use of InstaCal to guide you through your installation, detailed written instructions are provided in the next chapter.

We recommend you perform the software installation described in sections below prior to installing the board in your computer. The InstaCal™ operations below will show you how to properly set the switches and jumpers on the board prior to physically installing the board in your computer.

INSTALLING INSTACAL™

Windows (in its various forms) and DOS users install the program by running the INSTALL.EXE program supplied on your InstaCal diskette (some releases of InstaCal will provide SETUP.EXE rather than Install.EXE. Use SETUP.EXE if it is included on your InstaCal disk). It will create all required folders/directories and unpack the various pieces of compressed software. Simply run install/setup and follow the on-screen instructions. Note where the installed files are placed, as you will need to access them in the next step (the default location is on your main hard drive in a directory or folder named C:\CB).

EC Declaration of Conformity

We, ComputerBoards, Inc., declare under sole responsibility that the product:

CIO-CTR05	5 channel counter/timer board
CIO-CTR10	10 channel counter/timer board
Part Number	Description

to which this declaration relates, meets the essential requirements, is in conformity with, and CE marking has been applied according to the relevant EC Directives listed below using the relevant section of the following EC standards and other normative documents:

EU EMC Directive 89/336/EEC: Essential requirements relating to electromagnetic compatibility.

EU 55022 Class B: Limits and methods of measurements of radio interference characteristics of information technology equipment.

EN 50082-1: EC generic immunity requirements.

IEC 801-2: Electrostatic discharge requirements for industrial process measurement and control equipment.

IEC 801-3: Radiated electromagnetic field requirements for industrial process measurements and control equipment.

IEC 801-4: Electrically fast transients for industrial process measurement and control equipment.

Carl Haapaoja, Director of Quality Assurance

resistor positions which you may complete with the proper value components for your application.

LOW PASS FILTERS DE-BOUNCE INPUTS

A low pass filter is placed on the signal wires between a signal and an A/D board. It stops frequencies greater than the cut off frequency from entering the A/D board's analog or digital inputs.

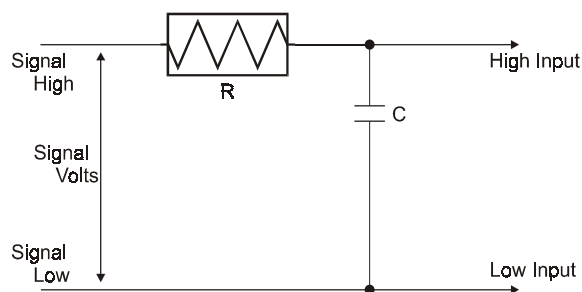
The key term in a low pass filter circuit is cut off frequency. The cut off frequency is that frequency above which no variation of voltage with respect to time may enter the circuit. For example, if a low pass filter had a cut off frequency of 30 Hz, the kind of interference associated with line voltage (60Hz) would be filtered out but a signal of 25Hz would be allowed to pass.

Also, in a digital circuit, a low pass filter might be used to de-bounce an input from a momentary contact button pushed by a person.

A low pass filter may be constructed from one resistor (R) and one capacitor (C). The cut off frequency is determined according to the formula:

$$F_c = \frac{1}{2 * \pi * R * C} \quad \text{Where } \pi = 3.14\dots$$

$$R = \frac{1}{2 * \pi * C * F_c}$$



LOW PASS FILTER - $F_c = \frac{1}{2 * \pi * R * C}$

RUNNING INSTACAL™

To run *InstaCal™* in the various forms of Windows, find the file named InstaCal.exe using your file management system and double click your mouse on it. In DOS simply type *instacal* and press the *Enter* key.

Once running, *InstaCal™* provides four sub-menus (plus exit).

1. Select **Install** (either highlight it and hit enter or double click your mouse on it).
2. Select **Board #0** (select another number if Board #0 is already installed)
3. Select **Board Type**
4. Move through the selections and highlight the particular board you are installing (e.g. CIO-CTR05 or CIO-CTR10). Either double click on the board or hit enter.
5. The board's default settings are then displayed. The board's defaults are:

BASE ADDRESS:	300H (768 Decimal) Same as data sheet. If address 300 is not available, choose another and InstaCal will show you the correct switch setting.
WAIT STATE:	OFF.

6. You are now ready to install the board in your computer. Turn off your computer, unplug it from AC power, open your PC and install the board in any unused ISA slot. After the board is installed and the computer is closed up, turn the power back on.
7. Run *InstaCal™* again, and at the main menu select **Test**.
 - a. Select the board you just installed
 - b. Select **Internal Test**
 - c. The internal control registers of the board will then be tested. If this test is successful, your board is installed correctly. If not, you likely have a base address conflict, or have the base address switch set incorrectly. Please refer to the next chapter for more information regarding selecting and setting the base address.
 - d. If the **Internal Test** is completed successfully, you may want to check that the I/O pins are working correctly. To check this select **External Test** and follow the instruction provided. This will

require you to use the shorting wires supplied with the board to short inputs to outputs for I/O testing.

A voltage divider takes advantage of the fact that the voltage across one of the resistors in a circuit is proportional to the voltage across the total resistance in the circuit.

The trick to using a voltage divider is to choose two resistors with the proper proportions relative to the full scale of the digital input and the maximum signal voltage.

The phenomena of dropping the voltage proportionally is often called attenuation. The formula for attenuation is:

$$\text{Attenuation} = \frac{R1 + R2}{R2}$$

The variable *Attenuation* is the proportional difference between the signal voltage max, and the full scale of the analog input.

$$2 = \frac{10K + 10K}{10K}$$

For example, if the signal varies between 0 and 20 volts and you wish to measure that with an analog input with a full scale range of 0 to 10 volts, the *Attenuation* is 2:1 or just 2.

$$R1 = (A - 1) * R2$$

For a given attenuation, pick a handy resistor and call it R2, then use this formula to calculate R1.

Digital inputs also make use of voltage dividers, for example, if you wish to measure a digital signal that is at 0 volts when off and 24 volts when on, you cannot connect that directly to the CIO-CTR digital inputs. The voltage must be dropped to 5 volts max when on. The Attenuation is 24:5 or 4.8. Use the equation above to find an appropriate R1 if R2 is 1K. Remember that a TTL input is 'on' when the input voltage is greater than 2.5 volts.

IMPORTANT NOTE: *The resistors, R1 and R2, are going to dissipate all the power in the divider circuit according to the equation Current = Voltage / Resistance. The higher the value of the resistance (R1 + R2) the less power dissipated by the divider circuit. Here is a simple rule:*

For Attenuation of 5:1 or less, no resistor should be less than 10K.

For Attenuation of greater than 5:1, no resistor should be less than 1K.

The CIO-TERMINAL has the circuitry on board to create custom voltage dividers. The CIO-TERMINAL is a 16" by 4" screw terminal board with two 37 pin D type connectors and 56 screw terminals (12 - 22 AWG). Designed for table top, wall or rack mounting, the board provides prototype, divider circuit, filter circuit and pull-up

VOLTAGE DIVIDERS

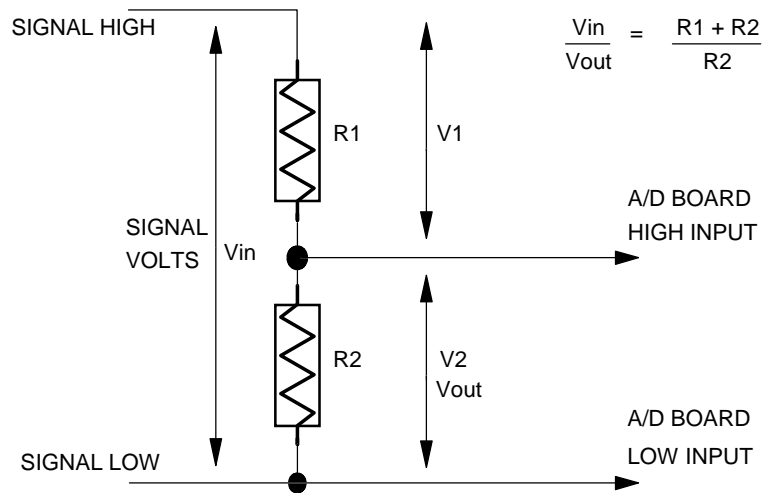
If you wish to measure a signal which varies over a range greater than the input range of a digital input, a voltage divider can drop the voltage of the input signal to the level the digital input can measure.

A voltage divider takes advantage of Ohm's law, which states,

$$\text{Voltage} = \text{Current} * \text{Resistance}$$

and Kirkoff's voltage law which states,

The sum of the voltage drops around a circuit will be equal to the voltage drop for the entire circuit.



SIMPLE VOLTAGE DIVIDER

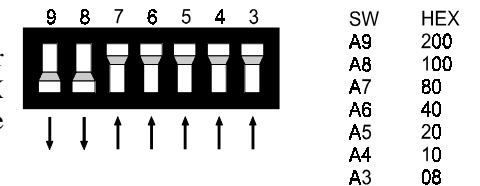
Implied in the above is that any variation in the voltage drop for the circuit as a whole will have a proportional variation in all the voltage drops in the circuit.

We highly recommend that you use the InstaCAL procedure described in the previous chapter to guide you through setting up your board. However, the following sections are provided in case you need to set up your board and you do not have access to the InstaCAL program.

The CIO-CTR has one bank of switches, a base address switch, and one jumper block which must be set before installing the board in your computer. The calibration and test program included with the CIO-CTR will show how these switches are to be set and should be run before you open your computer.

BASE ADDRESS

Unless there is already a board in your system which uses address 300 HEX (768 Decimal) then you can leave the switches as they are set at the factory.



In the example shown here, the CIO-CTR is set for base address 300H (768 Decimal).

BASE ADDRESS SWITCH - Address 300H shown here.

Certain address are used by the PC, others are free and may be used by the CIO-CTR and other expansion boards. We recommend BASE = 300H (768D) be tried first.

HEX RANGE	FUNCTION	HEX RANGE	FUNCTION
000-00F	8237 DMA #1	2C0-2CF	EGA
020-021	8259 PIC #1	2D0-2DF	EGA
040-043	8253 TIMER	2E0-2E7	GPIB (AT)
060-063	8255 PPI (XT)	2E8-2EF	SERIAL PORT
060-064	8742 CONTROLLER (AT)	2F8-2FF	SERIAL PORT
070-071	CMOS RAM & NMI MASK (AT)	300-30F	PROTOTYPE CARD
080-08F	DMA PAGE REGISTERS	310-31F	PROTOTYPE CARD
0A0-0A1	8259 PIC #2	320-32F	HARD DISK (XT)
0A0-0AF	NMI MASK (XT)	378-37F	PARALLEL PRINTER
0C0-0DF	8237 #2 (AT)	380-38F	SDLC
0F0-0FF	80287 NUMERIC CO-P (AT)	3A0-3AF	SDLC
1F0-1FF	HARD DISK (AT)	3B0-3BB	MDA

HEX RANGE	FUNCTION	HEX RANGE	FUNCTION
210-21F	EXPANSION UNIT (XT)	3C0-3CF	EGA
238-23B	BUS MOUSE	3D0-3DF	CGA
23C-23F	ALT BUS MOUSE	3E8-3EF	SERIAL PORT
270-27F	PARALLEL PRINTER	3F0-3F7	FLOPPY DISK
2B0-2BF	EGA	3F8-3FF	SERIAL PORT

The CIO-CTR BASE switch may be set for address in the range of 000-3F8 (000-3FC for the CIO-CTR05) so it should not be hard to find a free address area for your CIO-CTR. Once again, if you are not using IBM prototyping cards or some other board which occupies these addresses, then 300-31F HEX are free to use.

Address not specifically listed, such as 390-39F, are usually free.

INTERRUPT LEVEL SELECT

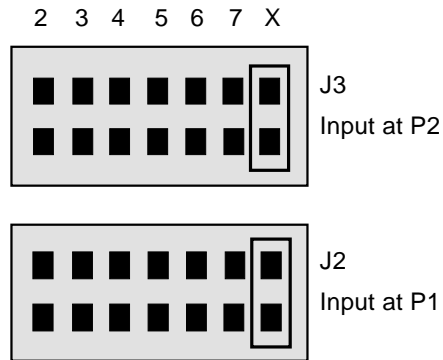
There are two rows of jumper blocks on the CIO-CTR10 and one on the CIO-CTR05, located just above the PC bus interface (gold pins). The factory default setting is that no interrupt level is set. The jumper is in the 'X' position.

Please leave the jumper in the 'X' position for now. Interrupts are hardware initiated software routines and are discussed in the section on programming.

On the CIO-CTR10 the lower block, J2, is for the IR input on P1. The upper block, J3, is for the IR input on P2

The trigger logic on the CIO-CTR is quite simple. Pin 1 of the 37 pin connector is an input jumper which maps the interrupt directly onto the PC bus. The signal to the bus is buffered. The buffer is enabled by a TTL low level on Pin 2, interrupt enable.

The interrupt level jumper on the CIO-CTR must also be installed. Move it from the 'X' position to the IRQ number you want the interrupt pulse on. On the CTR10, jumper block J2 is associated with the signals on connector P1. Jumper block J3 is associated with the signals on connector P2.



CIO-CTR INTERRUPT JUMPER BLOCK - IRQ Level. The jumper is in the X position which equals no IRQ.

ENVIRONMENTAL

Operating Temperature	0-50 Deg C
Storage Temperature	-20 to 70 Deg C
Humidity	0 to 90% Non-Condensing
Weight	5 Oz.

SPECIFICATIONS

POWER CONSUMPTION

CIO-CTR10

+5V Supply	300 mA Typical / 500 mA Max.
+12V Supply	None
-12V Supply	None

CIO-CTR05

+5V Supply	190mA Typical / 320 mA Max.
+12V Supply	None
-12V Supply	None

NOTE: Additional power will be drawn by user's connections to the power pins accessible on CIO-CTR connectors.

DIGITAL I/O

Output Low	0.5V Max @ 8mA
Output High	2.7V Min @ -0.4uA
Input Low	-0.5V Min, 0.8V Max
Input High	2.0V Min, 7V Max

COUNTER I/O

9513 Output Low	0.4V max @ 3.2mA
9513 Output High	2.4V min @ -200uA
9513 Input Low	-0.5V min, 0.8V max
9513 Input High	2.2V min, 5Vmax

INTERRUPT INPUT

Type	Positive Edge Triggered
PC Bus IRQ	IRQ2 - IRQ7
Enable	INTERRUPT ENABLE, Pin 2 (enabled on TTL low level)

Hardware interrupts are assigned by the PC, some are available to you.

NAME	DESCRIPTION	NAME	DESCRIPTION
NMI	PARITY	IRQ8	REAL TIME CLOCK (AT)
IRQ0 (AT)	TIMER	IRQ9	RE-DIRECTED TO IRQ2
IRQ1	KEYBOARD	IRQ10	UNASSIGNED
IRQ2	RESERVED (XT) INT 8-15 (AT)	IRQ11	UNASSIGNED
IRQ3	COM OR SDLC	IRQ12	UNASSIGNED
IRQ4	COM OR SDLC	IRQ13	80287 NUMERIC CO-P
IRQ5	HARD DISK (AT) LPT (AT)	IRQ14	HARD DISK
IRQ6	FLOPPY DISK	IRQ15	UNASSIGNED
IRQ7	LPT		

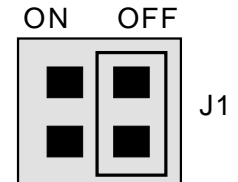
IRQ8-15 are AT only.

WAIT STATE JUMPER

The CIO-CTR boards have a wait state jumper which can enable an on-board wait state generator. A wait state is an extra delay injected into the processor's clock via the bus. This delay slows down the processor so that signals from slow devices (chips) will be valid.

The wait state generator on the CIO-CTR is only active when the CIO-CTR is being accessed. Your PC will not be slowed down in general by using the wait state.

We recommend that the wait state be used in all 16MHz or faster PCs.



WAIT STATE JUMPER BLOCK - For a wait state, place the jumper on the two leftmost pins. No wait state is selected here.

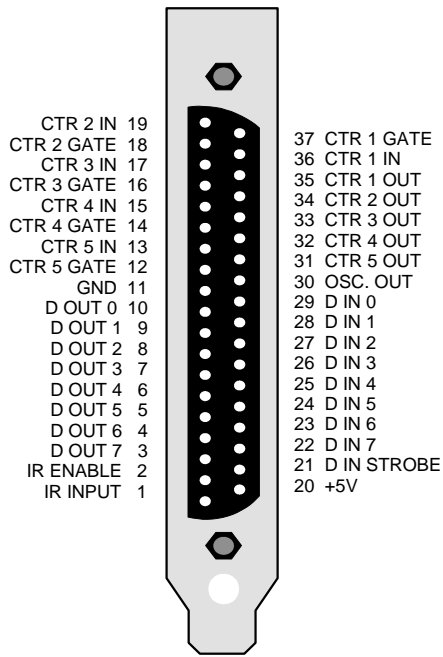
INSTALLING THE CIO-CTR IN THE COMPUTER

Turn the power off. Remove the cover of your computer. Please be careful not to dislodge any of the cables installed in your computer as you slide the cover off.

Locate an empty expansion slot in your computer. If you are installing a CIO-CTR10, it is best to locate two slots side by side. If you can create two side by side by moving boards, do so.

From the rear of the computer, place the CIO-CTR10 in the right hand of the two empty slots. This means that the empty slot is on the component side of the CIO-CTR. Cabling will be easier if there is an empty slot on the component side of the board.

Push the board firmly down into the expansion bus connector. If it is not seated fully it may fail to work and could short circuit the PC bus power onto a PC bus signal. This could damage the motherboard in your PC as well as the CIO-CTR. The CIO-CTR connector is a male 37 pin 'D' type connector. All the signals from the 9513, digital input, digital output and interrupt are accessible. The CTR10 has two of these connectors, P1 and P2. The signals on both are identical.



CIO-CTR CONNECTOR - View from the rear of the PC.

DIGITAL I/O REGISTERS

The digital input port at BASE + 2 is a 74LS373 input buffer with a strobe line. When STROBE is high, the current status of the inputs to the 74LS373 may be read. When STROBE goes low, the 74LS373 inputs are latched.

The digital output port at BASE + 3 is a 74LS273 output buffer. Each write to BASE + 3 places a byte of data on the output port.

CIO-CTR10 SECOND 9513

Where the numbers along the top row are the bit positions within the 8 bit byte and the numbers and symbols in the bottom row are the functions associated with that bit.

To write to or read from a register in decimal or HEX, the following weights apply:

BIT POSITION	DECIMAL VALUE	HEX VALUE
0	1	1
1	2	2
2	4	4
3	8	8
4	16	10
5	32	20
6	64	40
7	128	80

To write control or data to a register, the individual bits must be set to 0 or 1 then combined to form a Byte. Data read from registers must be analyzed to determine which bits are on or off.

The method of programming required to set/read bits from bytes is beyond the scope of this manual. It will be covered in most Introduction To Programming books, available from a bookstore.

In summary form, the registers and their function are listed on the following table. Within each register are 8 bits which may constitute a byte of data or 8 individual bit functions.

ADDRESS	READ FUNCTION	WRITE FUNCTION
BASE +0	Data from 9513 #1	Data for 9513 #1
BASE +1	Status of 9513 #1	Commands to 9513 #1
BASE +2	Digital input port	
BASE +3	No read back of output port	Digital output port
	CTR 10 ONLY	
BASE +4	Data from 9513 #2	Data for 9513 #2
BASE +5	Status of 9513 #2	Commands to 9513 #2
BASE +6	Digital input port, P2	
BASE +7	No read back of output port	Digital output port, P2

The CIO-CTR10 has two 9513 chips on it. The second of these, the one accessible via connector P2 at the rear of the board, is wired up identically to the 9513 on P1. Both are Keithley/MetraByte CTM-05 compatible both at the connector and the register level. Software written for the CTM-05, including Labtech Notebook, HP VEE and other third party software can operate both 'CTM-05s'. Simply install one CTM-05 at the BASE ADDRESS and install the other at the BASE ADDRESS + 4.

On the CIO-CTR10, the second 9513 counter timer chip's address is fixed at the board's base address + 4. If the board were configured at 300H (768 Decimal), then the second 9513 would reside at 304H (772 Decimal). No switches need to be set.

Each CIO-CTR board is supplied with the InstaCal installation, calibration and test package. Use it to guide the installation procedure. InstaCAL installation is described in chapter one (Quick Start).

The CIO-CTR family is fully supported by the powerful Universal Library package. Details regarding installation and usage of the Universal Library software can be found in the Universal Library documentation. Please note that InstaCal also creates a configuration file required for programmers who use the Universal Library programming libraries.

For those programmers writing drivers of their own, a complete register description follows.

CONTROL & DATA REGISTERS

The CIO-CTR10 is composed of 2 AM9513 counter timer chips. The CIO-CTR05 contains one 9513. Each 9513 contains five counters of 16 bits each. Associated with each counter are an input source, a count register, a load register, a hold register, an output and a gate. The 9513 is extremely flexible and this flexibility can make it a challenge to program the chip directly.

Unlike an Intel 8254 which has a single source, single gate and unique I/O address for each counter, the 9513 is fully programmable and any counter may be internally connected to any gate and receive its counts from a number of sources. In addition, each counter does not have a unique I/O address. The 9513 takes only two address per chip, one of which is a data path to the counter's load and hold registers.

There is no 9513 register information in this manual. Those wishing to know more about the AM9513 and its programming should request the manual from our technical support group. As of this writing there is no charge for the manual.

However, we suggest that you use the Universal Library, rather than resort to programming the 9513 directly. It is difficult to program and because programming support is available through the Universal Library, we cannot help with other 9513 programming.

CIO-CTR10 & CIO-CTR05 ADDRESSES

The CIO-CTR is an I/O mapped expansion board. The CTR10 occupies 8 I/O addresses and the CTR05 occupies 4 addresses.

The first address, or BASE ADDRESS, is determined by setting a bank of switches on the board.

Most of the functions that this board is capable of performing can be achieved using the Universal Library. Unless you have a good reason for direct register manipulation, we suggest you use the Universal Library.

The register descriptions follow the format:

7	6	5	4	3	2	1	0
A7	A6	A5	A4	A3	A2	A1	A0